



# PRESERVATION ALLIANCE

for greater philadelphia

## PRESERVATION

# MATTERS

THE NEWSLETTER OF THE PRESERVATION ALLIANCE FOR GREATER PHILADELPHIA

SPRING 2010

## Richard Moe Recognized with James Biddle Award for Lifetime Achievement



Dick came to the National Trust in 1993 after a distinguished career in public service and law. One of his earliest challenges as president of the National Trust—and one of his most significant accomplishments—was weaning the organization from a reliance on federal funding and, in the process, nearly doubling the annual budget to its current \$55 million. Today, through its headquarters in Washington and its eight regional and field offices, the National Trust supports a wide variety of programs that foster preservation at national, state and local levels.

Through Dick's leadership the National Trust has been successful in preserving many of the country's most important historic assets, either through advocacy efforts or direct intervention, including the restoration of the Lincoln Cottage in Washington, DC, the purchase of the Mies van der Rohe-designed Farnsworth House, and a major intervention in New Orleans following Hurricane Katrina.

Dick has kept the National Trust at the forefront of the preservation movement by supporting policies and programs that make preservation more relevant to improving the quality of life in communities across the country. Through his efforts, the National Trust developed the State and Local Partners program to provide technical assistance and support to a vast network of local and statewide preservation groups, including Preservation Pennsylvania

and the Preservation Alliance for Greater Philadelphia. Dick's personal commitment to the partners program is further evidenced by the establishment, with his wife Julia, of the Richard and Julia Moe fund to provide grants for strategic and innovative programs.

### The 17th Annual Preservation Achievement Awards

Every May, Preservation Month, the Preservation Alliance honors individuals, organizations and projects for outstanding accomplishments and contributions to the field of historic preservation. The 17th annual Preservation Achievement Awards will be held on May 12 at the Hyatt at the Bellevue. Visit [www.PreservationAlliance.com](http://www.PreservationAlliance.com) for details. (See more about the award winners on page 2-3.)

The Preservation Alliance is pleased to join with members of the preservation community across the country in honoring Richard Moe on the occasion of his retirement from the National Trust, and in expressing our appreciation for his visionary leadership.

Richard Moe has transformed the National Trust for Historic Preservation during his seventeen years as president, and in doing so has transformed the field of historic preservation in cities and states across the country.

## Councilman Bill Green Recipient of Public Service Award

When the National Trust for Historic Preservation listed the Boyd Theater on its 11 Most Endangered List in 2008, Councilman Bill Green recognized the opportunity to propose adding the authority to protect historic interiors to Philadelphia's preservation ordinance. He introduced a bill into City Council to allow the Philadelphia Historical Commission to list interior spaces on the Philadelphia Register of Historic Places.

Although there was general support for the concept, many parties—including some in the preservation community—were concerned about the specific language of the bill and asked Councilman Green to allow time for discussion. Both the Historical Commission and the Planning Commission held sessions for public comment and Councilman Green made amendments to the bill reflecting these discus-



sions. Behind the scenes he and his staff and others met with cultural institutions and property owners that had concern about the impact of the bill on their properties. With the assistance of Councilman William Greenlee, a co-sponsor of the bill along with Councilwoman Blondell Reynolds Brown, Councilman Green also reached out to other members of City Council.

After many months of patient and persistent work by Councilman Green and his staff, a carefully crafted bill was passed by City Council in June 2009 and signed into law by Mayor Nutter on July 1, 2009. The Historical Commission promptly created new rules and regulations for interior designation and by early 2010 Councilman Green's vision of providing the authority to protect historic interiors had become a reality.



### EXECUTIVE DIRECTOR'S MESSAGE

Each spring, the Preservation Alliance honors positive contributions to historic preservation in two awards ceremonies. In March, as part of the Old House Fair, we recognize the accomplishments of individual homeowners who have demonstrated high levels of stewardship in the maintenance and rehabilitation of their historic property. The Alliance began the homeowner recognition program three years ago. This year we presented 16 homeowners with certificates of appreciation for their outstanding work. (See page 4.)

Our Achievement Awards program in May honors private developers, institutions and nonprofit organizations for major preservation projects completed in 2009. In spite of the turndown in the real estate industry, we received 30 nominations for awards this year and are pleased to present 21 project awards at the 17th Annual Awards Luncheon on May 12.

The two awards programs represent the two different facets of historic preservation: preservation and restoration of landmark properties that comprise the region's unique architectural heritage and preservation of the residential properties that give the neighborhoods of Philadelphia and communities in the region a distinctive character. The preservation of landmark properties has traditionally been a focus of the Alliance's advocacy efforts and continues to be so today. However, in recent years we have turned our attention to the preservation of neighborhoods and historic homes to a much greater degree than in the past. I am pleased that we will be able to continue and expand these neighborhood efforts as a result of grants from the William Penn Foundation and through the management of the Vital Neighborhoods Initiative. (See page 5.)

Foundation grants are the primary support for our programmatic initiatives. But like other nonprofit organizations, we are dependent on membership and general contributions to provide our core operating support. On pages 8-9 you will find a list of current Alliance members. If your name is on the list, let me thank you very much for your generous support. If your name is not on the list, I hope you will consider becoming a member or making a contribution to support our work and in turn support the preservation of both historic landmark properties and distinctive neighborhoods.

JOHN ANDREW GALLERY  
Executive Director

# The 17th Annual Preservation Achievement Awards

## 2010 Special Recognition Awards



**The James Biddle Award**  
For lifetime achievement in historic preservation  
Richard Moe



**Public Service Award**  
For preservation in the public interest  
Councilman Bill Green



**Special Recognition**  
Wheeler Brothers Holdings  
*In Memory of Hal Wheeler (1956-2010)*



**Board of Directors Award**  
for exceptional stewardship of historic properties

Fairmount Park Historic Preservation Trust



**Community Action Awards**  
for achievement by community organizations

Save La Ronda Now!  
Lower Merion Conservancy  
Lower Merion Township  
Lower Merion Historical Society  
*for organizing community support for La Ronda*



Whitemarsh Foundation  
Peter and Bonnie McCausland  
Edith R. Dixon and Ellin Dixon Miller  
*for preservation of Erdenheim Farm*

## 2010 AIA Philadelphia Awards



**THE LAZARETTO QUARANTINE STATION**  
Tinicum Township, Delaware County, PA  
*Architect Unknown, 1799*



**The Henry J. Magaziner EFAIA Award**  
of the Historic Preservation Committee of AIA Philadelphia

### HIDDEN CITY PHILADELPHIA

*Thaddeus A. Squire, President*  
*Jay Wahl, Managing Producer*  
*Becca Bernstein, Director of Development & Administration*

## Grand Jury Awards

### 1 814 Pine Street

William Vessal  
*HBD Associates, LLC; Cascio Electric, Inc.; Federal Security; Glenn Wood Plumbing; J. Gillies Heating & Air Conditioning, LLC; Loonstyn Roofing & Contracting; Magee Stucco and Brownstone; Marsico Construction Co; Refine Flooring*

### 2 Academy of Music Ballroom

The Philadelphia Orchestra  
*KlingStubbins; Artistic Doors and Windows Inc.; Ball and Ball; Brintons; Femenella and Associates; John Canning Painting & Conservation Studios; Keast & Hood Co.; L.F. Driscoll Co., LLC; Arnold Wood Conservation, LLC; Mathieu Lustrerie; The Art of Glass, Inc.*

### 3 Clarke Residence

Julie and James Alexandre  
*Archer & Buchanan, Ltd.; Barbara Gisel Design, Ltd.; Cullen Construction Inc.; Knudsen Woodworking; Landis Stone Masonry; Lititz Planing Mill Company; The Art of Glass, Inc.*

### 4 Fleisher Art Memorial Window Project

Fleisher Art Memorial  
*Myers Constructs, Inc.; Kane Woodworking Co.; KSK Architects Planners Historians, Inc.; Peak Window & Door Co.; West Supply*

### 5 Franklin Institute - Franklin and Jordan Hall

The Franklin Institute  
*C. Erickson & Sons, Inc.; Available Light; Jablonski Building Conservation, Inc.; Old Philadelphia Associates, Inc.; Verner Johnson, Inc.*

### 6 Friends Center

Friends Center Corporation  
*UJMN Architects + Designers; AKF Engineers; Clemens Construction Co., Inc.; Consilience, LLC; Keast & Hood Co.; The McGee Company*

### 7 Germantown White House (Deshler-Morris House)

Independence National Historical Park  
*John Milner Architects, Inc.; Daniel J. Keating Company; Deshler Morris House Committee; HDR; NPS Denver Service Center*

### 8 Girard Estate Warehouses

20-30 North Front Street, LLC  
*BLT Architects; Clemens Construction Co., Inc.; Goldman, Sachs & Co.; O'Donnell & Naccarato; Powers & Company, Inc.; Wachovia Bank*

### 9 Hammers & Pens: Craft a New Nation

Philadelphia Society for the Preservation of Landmarks

### 10 Kimpton Hotel Palomar

Kimpton Hotels and Restaurants  
*Gensler; Heritage Consulting Group; INTECH Construction, Inc.; Powerstrip Studio; Wiss, Janney, Elstner Associates, Inc.; X-nth*

### 11 Little Abington Meetinghouse

Abington Township  
*Fairmount Park Historic Preservation Trust; Abington Art Center; Abington Meetinghouse Committee; Calfayan Construction Associates, Inc.; Paul Macht Architects*

### 12 Mask and Wig Club

The Mask and Wig Club  
*Matthew Millan Architects, Inc.; E&M Engineering, Inc.; Edward B. O'Reilly & Associates, Inc.; EverGreene Architectural Arts, Inc.; Historic Surfaces, LLC; Keast & Hood Co.; LaMarra Construction, Inc.; Light Space Design; Metropolitan Acoustics, LLC*

### 13 Music Building at the University of Pennsylvania

University of Pennsylvania  
*Ann Beha Architects; AHA Consulting Engineers, Inc.; Building Conservation Associates, Inc.; Daniel J. Keating Company; Hunt Engineering Company; Keast & Hood Co.; Kirkegaard Associates; Masonry Preservation Group, Inc.; Stephen Stimson Associates; Window Repairs and Restoration, LLC*

### 14 Pi Lambda Phi Fraternity House

3912 Spruce Street Corporation  
*Powers & Company, Inc.; Felber Ornamental Plastering Corporation; MO3 Design, Inc.; Vickery Stone Company, Inc.*

### 15 Ride!Philadelphia Bus Shelter Sign System

Center City District  
*The Athenaeum of Philadelphia; Avencia Incorporated; Free Library of Philadelphia; Glasstoration, Inc.; Historical Society of Pennsylvania; Joel Katz Design Associates; Library Company of Philadelphia; Pannier Graphics; PennDOT; Pennsylvania Historical & Museum Commission; Temple University Urban Archives*

### 16 Rittenhouse Plaza Arch and Gate

Rittenhouse Plaza, Inc.  
*RMJM; Aegis Property Group; Bob McGovern; Knapp Masonry; Kreilick Conservation, LLC; Vickery Stone Company, Inc.; Vintage Metalwork, Inc.*

### 17 Rodin Museum Meudon Monument

Philadelphia Museum of Art  
*Milner + Carr Conservation, LLC; Dan Lepore & Sons Company; Fairmount Park Commission; Gooding, Simpson & Mackes, Inc.; Pennsylvania Horticultural Society; Vintage Metalwork, Inc.*

### 18 Rose Valley Farm

Geoff and Sandra Shepard  
*Ball and Ball; Bryant Phillips Construction, Inc.; Bryce M. Ritter & Son; Bucks County Soapstone Company, Inc.; Lynne M. Rohlifing Design; Moravian Pottery & Tile Works; Peter Batchelor & Associates; Roger Wright Furniture Ltd.; Tony DiMeo; William M. Dunleavy & Co., Inc.*

### 19 St. Luke and The Epiphany

The Church of St. Luke and The Epiphany  
*TranSystems; J.S. Cornell & Son, Inc.; Keast & Hood Co.*

### 20 Spring Garden Community Revitalization Phase 2

Spring Garden Community Development Corporation, Philadelphia Housing Authority  
*Michaels Development Company*  
*Dale Corporation; KSK Architects Planners Historians, Inc.; Pennsylvania Housing Finance Agency*

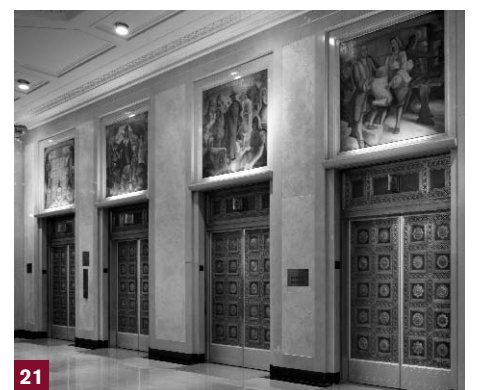
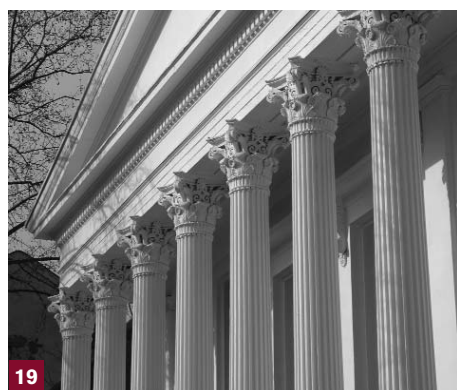
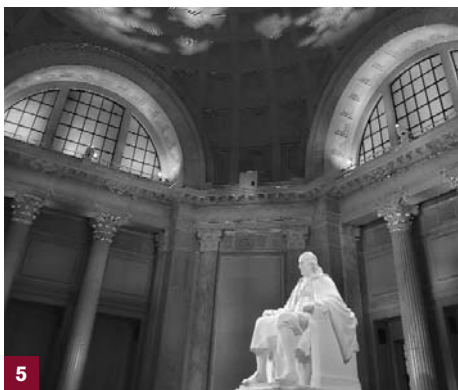
### 21 Strawbridge & Clothier Department Store

Pennsylvania Real Estate Investment Trust  
*BLT Architects; C.B. Development Services, Inc.; John Milner Associates, Inc.; Keast & Hood Co.; PHY Engineers, Inc.; Shoemaker/Synterra a Joint Venture; Van Deusen & Associates*

# The 17th Annual Preservation Achievement Awards

For more information about all of the 2010 Preservation Achievement Award winners, visit [www.PreservationAlliance.com](http://www.PreservationAlliance.com).

## GRAND JURY AWARDS



# 2010 Homeowner Awards

In addition to the large scale projects the Preservation Alliance honors every year, smaller grassroots achievements in historic preservation are recognized annually at the Alliance's Old House Fair. The 2010 Homeowner Awards were given to sixteen homeowners for their outstanding restoration and renovation projects in the greater Philadelphia area.

## Congratulations to the 2010 Homeowner Award Winners:

**David & Carole Alfe**  
Cove Rd, Pennsauken, NJ

**Blaine Applegate**  
Makefield Road, Yardley, PA

**Allan & Marla Beletz**  
Spring Mill Rd, Plymouth Meeting, PA

**Martin Bernstein & Anna Prosseda**  
Ellsworth Street, Philadelphia

**Betty Gainsborough**  
E. Columbia Avenue, Philadelphia

**Janet Grace & Paul Welde**  
School House Lane, Philadelphia

**Dean Hartung & Ellen Hutchinson**  
E. Mount Airy Ave, Philadelphia

**Stan Heleva & Michelle Pauls**  
Walking Fish Theater, Frankford Ave, Philadelphia

**Adrienne & Harry Imburgia**  
Church Street, Phoenixville, PA

**Dino Kelly-Cataldi & Michael Kelly-Cataldi**  
Cheltenham Avenue, Wyndmoor, PA

**Stephanie Kindt and Terry Henry**  
Overbrook Avenue, Philadelphia

**Karl Martin & Andrew Kite**  
W. Ellet Street, Philadelphia

**Ann Laslo**  
River Road, Center Bridge, PA

**Jason & Reena Schaeffer**  
Kings Hwy W., Haddonfield, NJ

**Caroline West**  
Boyer Street, Philadelphia

**Nancy & Randy Williams**  
Germantown Avenue, Philadelphia

### 1 Karl Martin & Andrew Kite

W. Ellet Street, Philadelphia

Renovations to this 1925 Tudor-style twin in Mt. Airy were focused on the reconstruction of a ground floor sunroom and restoration of a second-story bedroom dormer. Multi-paned casement windows replaced architecturally incompatible ones and the exterior dormer walls were restored to match the original Tudor details. A new copper gutter and leader directs rainwater to the original underground drainage system. After renovating the facade, Karl and Andrew repaired the original Vermont green slate roof and added landscaped stepped terraces at the front yard using Wissahickon schist, the primary original construction material of the house. **Team:** John Daly/Direct Value Home Remodeling, general contractor

### 2 Jason & Reena Schaeffer

Kings Hwy W., Haddonfield, NJ

The Schaeffer's five-bedroom, 3,800 square-foot house, built in 1894 by Clement Remington, had been a dental office on the first floor with apartments upstairs and had been abandoned for some time before the Schaeffers purchased it in 2007. It took Jason and his full-time crew of four plus other craftspeople 18 months to make the house habitable. The

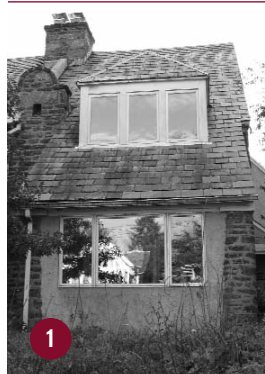
structure was shored up, storm windows installed over the original cherry windows and a new efficient plumbing system was installed. Jason & Reena did their best to salvage all the materials they could—doors, hardware, mantels, windows, flooring, trim, and stained glass. The porch was rebuilt based on the architect's original 1894 drawing and from a turn-of-century photograph. New wood siding and new slate roof were installed. The home is 99% of the way toward achieving LEED for Homes certification. **Team:** Williamson Design, Jack Williamson—architect; Tim Schaeffer Communities—contractor.

### 3 Adrienne & Harry Imburgia

Church Street, Phoenixville, PA

The owners of this 1860s brick twin in Phoenixville tackled two major projects and completed both in less than two months. Adrienne and Harry planned to restore the first floor storefront of the house and during removal of infill material, were surprised and pleased to find original storefront wood trim and detailing. One of the owners' fathers, a carpenter and cabinet maker, helped them recreate the missing and damaged detailing elements and restore the original window, panels and entrance. At the rear yard of the property, a chain link fence was replaced with a new solid

BEFORE



1

AFTER



2



3



4



wood fence and a new sloped 'roof' pergola features classic ornamental cut rafter tails. **Team:** Adrienne and Harry Imburgia; John Condon, general contractor.

### 4 Allan & Marla Beletz

Spring Mill Rd, Plymouth Meeting, PA

Allan & Marla's Georgian-style stone home was built in three phases, in 1739, 1780 and 1820

and they are only its sixth owners. In 2001 the house was littered with garbage and dirt, with holes in the floors and windows. They restored all period detailing, retaining imperfections to reflect the evolution of the home, while extensively upgrading plumbing and electrical systems. Original materials that were salvaged include a marble cistern, seven fireplaces and two bread ovens. **Team:** Alan and Marla Beletz.

## Old House Fair 2010

This year's Old House Fair was another rousing success. The April 3 event at Germantown Friends School was attended by owners and fans of older and historic houses who participated in free "Ask the Experts" consultations and hands-on demonstrations, and explored 70 exhibition booths of preservation professionals and vendors. The Old House Fair grows out of the Alliance's mission to provide technical assistance and educational activities that encourage restoration and reuse of historic buildings. We recognize that preservation is community driven and begins with the efforts of dedicated stewards who tend their historic houses.



[ Left ] Keith Leitner provides advice on history and design to the owner of an historic house at the "Ask the Experts" booth. [ Right ] Steve Long of Protective Coating Company (PC Products) consults with Old House Fair visitors.

# Neighborhood Preservation

## William Penn Foundation Approves Two-Year Grant

In February 2010 the William Penn Foundation approved a two-year grant of \$443,000 to the Preservation Alliance to support neighborhood preservation and advocacy programs. The Alliance is grateful to the Foundation for this generous support and for past grants that supported neighborhood preservation and advocacy.

The new grant will enable the Alliance to continue to provide community organizations with technical assistance on preservation issues in their neighborhoods and to offer a number of programs focused on historic preservation and community development. These programs will include 1) free workshops for homeowners on property maintenance, insurance, and energy efficiency for older homes and related topics, to be held in the fall of 2010 and in the spring and fall of 2011; 2) the second conference on neighborhood preservation and community development, to be held on October 8; and 3) assistance to neighborhood organizations interested in preparing applications to be designated as an historic district or a conservation district.

The grant will also enable the Alliance to explore the way historic preservation can contribute to economic development by increasing access to federal investment tax credits for rehabilitation of historic properties. Rehabilitation of income-producing properties listed on the National Register of Historic Places qualifies for a 20% tax credit, which provides developers with financing for rehabilitation costs. To increase access to the tax credits, the Alliance intends to explore opportunities to create new National Register Districts in sections of the city where there are historic properties suitable for conversion and where some development activity has already been started by private developers or community development corporations.

For additional information about technical assistance or programs contact Patrick Hauck, Director of the Alliance's Neighborhood

Preservation Programs, at [patrick@preservationalliance.com](mailto:patrick@preservationalliance.com) or 215.546.1146 x4.

## Next Phase of Preservation Plan Funded

The William Penn Foundation has also approved a two-year matching grant of \$200,000 to the Preservation Alliance to support the next phase of creating a preservation plan for Philadelphia. The Alliance completed a planning phase on the idea of a preservation plan and a citywide survey of historic resources in 2009, supported by grants from the William Penn Foundation, the Heritage Philadelphia Program of the Pew Center for Arts and Heritage, and the Barra Foundation. The planning phase resulted in two summary reports—*Historic Preservation in 2020: A Strategic Vision and Strategic Actions* and *Survey Methodology*. Both reports and other supporting documents are available at [www.PreservePhiladelphia.org](http://www.PreservePhiladelphia.org).

The next phase is being coordinated with the Philadelphia City Planning Commission's work plan for the development of a new comprehensive plan for the city and the creation of 18 district plans. The Alliance views our work on a preservation plan as providing information that the City Planning Commission can use to develop a preservation component of the comprehensive and district plans. Beginning this summer the Alliance intends to engage community organizations in several sections of the city to develop "neighborhood character plans" that will help to define the important qualities of the physical environment in each neighborhood as well as specific buildings, blocks or districts that have historic significance. This work will be undertaken in partnership with the Graduate Program in Historic Preservation at the University of Pennsylvania.

The Alliance will also be continuing work begun in 2009 to write a history of the physical development of the city to guide future survey work. An overview of the history of the development of the city was prepared in 2009, along with histories for the Frankford/Bridesburg/Tacony area and the Roxborough/



Panel discusses the Vital Neighborhoods Initiative (l. to r.): Melissa Blount, TD Bank; Deborah McColloch, Office of Housing and Community Development; Thomas Burns, Urban Venture Group, Inc.; Cynthia Bradley, Mt. Airy neighborhood leader; moderated by Tom Ferrick, Jr, Metropolis website.

Manayunk area. These reports are also available at [www.PreservePhiladelphia.org](http://www.PreservePhiladelphia.org).

## Alliance to Manage Vital Neighborhoods Initiative

The Office of Housing and Community Development (OHCD) and NeighborhoodsNow have selected the Alliance to continue the Vital Neighborhoods Initiative begun by NeighborhoodsNow with support from OHCD. The concept of the Vital Neighborhoods Initiative and the Alliance's selection as the new manager of the program was announced at a special event with Mayor Michael Nutter in March 2010.

The Vital Neighborhoods Initiative is modeled after the very successful Healthy Neighborhoods Program in Baltimore, MD. The objective of the program is to strengthen "middle market neighborhoods"—neighborhoods that are relatively stable, but could benefit from marketing and improvement projects to encourage housing sales and investment. After working with nine community organizations in a pilot phase, NeighborhoodsNow selected three neighborhood organizations to work with on the first phase of implementation: New Kensington CDC, Fairmount CDC and Mt. Airy Revitalization Corp. Each group is

developing a neighborhood marketing program and website and undertaking a series of projects to improve the character and appearance of their neighborhood.

The Vital Neighborhoods concept is described in the report *Protecting Philadelphia's Backbone A Strategy for Vital Neighborhoods* written by Paul Brophy and Thomas Burns for NeighborhoodsNow ([www.PreservationAlliance.com/files/ProtectingPhiladelphiasBackbone.pdf](http://www.PreservationAlliance.com/files/ProtectingPhiladelphiasBackbone.pdf)). A PowerPoint presentation on each of the three neighborhoods and their projects is also available on the website.

In 2010 the Preservation Alliance expects to continue to work with the three neighborhoods currently in the program and to create an expansion strategy that will lead to the selection of additional neighborhoods by early 2011. The Alliance is working in partnership with the Center for Architecture and the Community Design Collaborative to develop future phases of the Vital Neighborhoods Initiative.

The Alliance is grateful to the board of directors of NeighborhoodsNow for establishing this program and to its former executive director, Beverly Coleman, for her leadership in bringing the Healthy Neighborhoods concept to Philadelphia. For further information about Vital Neighborhoods Initiative contact [john@preservationalliance.com](mailto:john@preservationalliance.com).

## MARK YOUR CALENDARS!

### A Sense of Place: Preserving Philadelphia's Neighborhoods

2010 Citywide Conference for Philadelphia Neighborhood Leaders

FRIDAY, OCTOBER 8, 2010 | 8:30am – 3:30pm

TEMPLE UNIVERSITY | Student Faculty Center | 3340 N. Broad Street

Neighborhood organizations and leaders from throughout Philadelphia are invited to convene for the Preservation Alliance's second citywide conference focusing on historic preservation in neighborhoods. Participants will learn about the important role of preservation in neighborhood stabilization/revitalization and successful examples from local communities and meet with representatives of the non-profit and governmental organizations that are playing an active role in these efforts. For details, visit [www.Preservation-Alliance.com](http://www.Preservation-Alliance.com) or contact Patrick Hauck, Director of Neighborhood Preservation Programs at 215.546.1146 x4 or [patrick@preservationalliance.com](mailto:patrick@preservationalliance.com).



# PRESERVATION MONTH CALENDAR

History and preservation come alive during May, National Historic Preservation Month, with a full range of special events in the region. Take a walking tour, learn how to repair your historic windows or celebrate achievements in preservation. The calendar below is only a sampling; view a full calendar of May events at [www.PreservationAlliance.com/calendar](http://www.PreservationAlliance.com/calendar). Events marked with the Alliance's logo are Alliance-sponsored or are available to Alliance members at a discount.

## SATURDAY May 1

### Preservation Alliance Architectural Walking Tour: Littlest Streets of Fidler Square

2:00pm

Meet at center of Fidler Square, 23rd & Pine Streets, Philadelphia

FREE

The Alliance's 2010 Architectural Walking Tour season kicks off with a FREE tour as part of Jane's Walk USA, an annual national celebration of Jane Jacobs, author of *The Death and Life of Great American Cities*.

WEDNESDAYS, SATURDAYS, SUNDAYS

## May 1-30

### Preservation Alliance Architectural Walking Tours

\$10; \$5 Preservation Alliance members

[preservationalliance.com/events/walking\\_tours.php](http://preservationalliance.com/events/walking_tours.php)

215.546.1146 x3

## SUNDAY May 2

### Overbrook Farms House Tour and Tea

1-5pm

\$25

Info: 215.477.9250; [www.overbrookfarmsclub.org](http://www.overbrookfarmsclub.org)

From extraordinary private homes to notable historic churches, the self-guided walking tour acquaints visitors with the outstanding architecture of this planned turn-of-the-century railroad suburb.

## TUESDAYS May 4, 11, 18, 25

### Building Philadelphia: Architecture, History & Politics

6-8pm

Center for Architecture, 1218 Arch Street, Philadelphia

\$30; \$25 Alliance members; \$15 under 35

Registration required: [www.aiaphiladelphia.org/events](http://www.aiaphiladelphia.org/events)

215.569.3186

Continuing lecture series on the development of Philadelphia and its architecture, taught by architects, urban planners, art historians and social historians from local universities and architecture firms.

**May 4:** The Immigrant and the City, Caroline Gollab, PhD, Thomas Jefferson University

**May 11:** The Hidden City: Archaeology of Philadelphia, Rebecca Yamin, PhD, John Milner Associates, Inc.

**May 18:** Planning the Modern City: The Parkway and Society Hill, David Brownlee, PhD, University of Pennsylvania

**May 25:** Misfits and Heroes: Modernism in the Delaware Valley, William Whittaker, University of Pennsylvania

## WEDNESDAY May 5

### Homeowner Workshop: Masonry and Pointing

6:30pm

Coral Street Arts House, 2446 Coral Street

FREE

Reservations required: [melissa@preservationalliance.com](mailto:melissa@preservationalliance.com)

215.546.1146 x6

Presented by the Preservation Alliance and the Fairmount Park Historic Preservation Trust in collaboration with the New Kensington Community Development Corp.

## THURSDAY May 6

### "Hands On" Homeowner Workshop: Repairing Wood Windows

6:30pm

Historic RittenhouseTown 206 Lincoln Drive, Philadelphia

FREE

Reservations required: [melissa@preservationalliance.com](mailto:melissa@preservationalliance.com)

215.546.1146 x6

Presented by the Preservation Alliance and the Fairmount Park Historic Preservation Trust in collaboration with Historic RittenhouseTown.

## WEDNESDAY May 12

### 17th Annual Preservation Achievement Awards Luncheon

11am

Hyatt at the Bellevue, Broad and Walnut Sts., Philadelphia

\$80 and up

Tickets and info: [www.PreservationAlliance.com](http://www.PreservationAlliance.com) 215.546.1146 x3

The Alliance honors extraordinary accomplishments in historic preservation throughout the region.

## WEDNESDAY May 12

### Ride!Philadelphia Exhibit Opening Reception and Lecture

5-7pm

Center for Architecture, 1218 Arch Street, Philadelphia

FREE

The Ride!Philadelphia bus shelter signage features transit maps and historic photographs specific to the location of each shelter, and it increases public awareness of historic preservation by showcasing both the surviving treasures and tragic losses of Center City's built environment.

## WEDNESDAY-FRIDAY May 12-14

### Rethink. Recover. Rebuild. Reinventing Older Communities

Hyatt Regency Philadelphia at Penn's Landing

\$425

Details and registration: <http://www.phil.frb.org/community-development/events/reinventing-2010> 215.574.6037

Conference focusing on reinventing older communities in the wake of the subprime foreclosure crisis and the federal government's economic stimulus programs.

## MONDAY-THURSDAY May 17-20

### Pennsylvania's Statewide Conference on Heritage

\$25 and up

Details and registration: [www.pennbyways.org](http://www.pennbyways.org)

Conference will feature workshops, sessions and speakers from the historic preservation, archaeological, heritage tourism, transportation, legislative, and planning communities.

## THURSDAY May 20

### Silent, Weird, Beautiful: Philadelphia's City Hall and Its Architect

5:30pm

Wagner Free Institute of Science, 1700 W. Montgomery Ave.

FREE

Info: [www.wagnerfreeinstitute.org](http://www.wagnerfreeinstitute.org) 215.763.6529

Lecture by Dr. Michael Lewis, Williams College, on John McArthur, Jr., one of Philadelphia's most influential and yet least known architects who designed both City Hall and the Wagner Free Institute of Science.

## FRIDAY May 21

### Ghost Hunting 101

7-10pm

\$20

Cliveden of the National Trust, 6401 Germantown Ave., Philadelphia

Registration required: 215.848.1777 x223 or [rfink@cliveden.org](mailto:rfink@cliveden.org)

Ghost hunting workshop and live paranormal investigation of the Chew House and Cliveden's historic battlefield.

## SATURDAY May 22

### Architectural Tour of the Tulpehocken Station Historic District

10am

Ebenezer Maxwell Mansion, 200 West Tulpehocken Street, Philadelphia

\$25; \$20 for Maxwell Mansion members

Reservations required: 215.438.1861

[www.ebenazermaxwellmansion.org](http://www.ebenazermaxwellmansion.org)

Focusing on French Second Empire (1865—1880s) architecture of the neighborhood.

## SUNDAY May 23

### The Historic Homes and Gardens of Merion Station

1-4pm

Park and register: Congregation Adath Israel, 250 N. Highland Avenue, Merion Station

\$40; \$35 Lower Merion Conservancy members

Register and info: [www.LMConservancy.org](http://www.LMConservancy.org) or 610.645.9030

Self-guided walking tour of gardens and landscapes in historic settings and homes of several Merion Station estates.

## SUNDAY May 23

### Queen Village Open House and Garden Tour

1-5pm

Old Pine Church, 412 Pine Street, Philadelphia

\$25

Info/tickets: [mattdejulio@aol.com](mailto:mattdejulio@aol.com) or 215.629.1288

More than ten homes and gardens, both historical and contemporary, will be part of this self-guided walking tour sponsored by the Queen Village Neighbors Association.

## SATURDAY May 29

### Philadelphia Doll Museum presents "International Black Doll Show & Sale"

10am-5pm

Pennsylvania Convention Center, 12th and Arch Sts, Philadelphia

\$7; \$5 seniors/children under 12

Info: 215.787.0220 [dollmuse@aol.com](mailto:dollmuse@aol.com)

[www.philadollmuseum.com](http://www.philadollmuseum.com)

The Philadelphia Doll Museum, the only known museum in the nation that emphasizes the collection and preservation of black dolls as artifacts of history and culture, hosts a doll show and sale.

# Advocacy Updates

## Redecorated Shed

On March 19, Drexel University presented plans for their new URBN Center of Design, to be housed in the iconic former ISI Building by Venturi, Scott Brown and Associates (3501 Market Street, 1978). This quintessential “decorated shed” is an important early work of postmodernism and a cherished University City landmark. The principal south elevation, with its polychrome tile patterns and porcelain enamel signage, will be preserved intact, but many in the audience expressed concern with other aspects of the design. Minneapolis architects Meyer Scherer & Rockcastle propose a radical reconfiguration of the building’s east and north facades, introducing large expanses of glass and exposing structural members at the building’s beveled southeast corner entryway.

These alterations would compromise the integrity of a design that is just as significant to the history of twentieth century architecture as Frank Furness’s Centennial Bank, lovingly restored by Drexel as the Paul Peck Alumni Center, is to the nineteenth century. The Alliance comments to Vice President of University Facilities Robert Francis on the proposed renovations can be viewed at [www.PreservationAlliance.com/advocacy/ISI.pdf](http://www.PreservationAlliance.com/advocacy/ISI.pdf)

## New Life in Old City

Nearly a quarter century after being acquired by the Philadelphia Redevelopment Authority, the long-neglected Bouvier Building (149 S. Hancock Street) may have a new lease on life. The scrappy Old City landmark was built in the 1830s as the workshop of cabinetmaker Michael Bouvier, Jacqueline Kennedy Onassis’s great-great-grandfather. Added to the Philadelphia Register in 1976, the building was at the center of a preservation battle in 1987, when owners sought to demolish it for parking. In an important precedent-setting decision, the Historical Commission denied the owner’s application, and in 1988, the city purchased the property, hoping new owners would come forward to preserve it.

The long wait might be over. On April 9, 2010, the Historical Commission approved plans to convert the building into a single-family home. The Preservation Alliance appreciates the enthusiasm of the new owners to take on a difficult property and to follow the advice and guidance of the Historical Commission’s Architectural Committee. Special appreciation is due to Terry Gillen, Executive Director, and the Redevelopment Authority of Philadelphia for actively marketing the property, which had been languishing in the RDA inventory for years.



ISI Building



Bouvier Building



Marine Corps Depot

## CHOP Eyes Former Marine Depot

In its March 12 edition, the *Philadelphia Business Journal* reported that the Children’s Hospital of Pennsylvania was contemplating demolition of the former Marine Corps Depot (700-734 Schuylkill Avenue), a 700,000 square-foot behemoth on the banks of the Schuylkill River. Designed by noted architect Eugene Stopper (Bell Telephone Building), the Moderne warehouse was placed on the National Register in 2004. In its place would rise a 400,000 square-foot office building.

Preservationists question the necessity to demolish the structure, which could easily accommodate any number of new uses. Built to store heavy military equipment, demolition of the structure would be a lengthy, costly, and environmentally destructive process, sending untold tons of waste to the landfill. The hospital expects to announce plans for the site by June, and the Preservation Alliance strongly encourages hospital officials to explore adaptive reuse options for the building.

## Awbury Arboretum District Advances

Fresh on the heels of two new Historic District designations in late 2009 (Tudor East Falls and Parkside), the Designation Committee of the Philadelphia Historical Commission approved the nomination of the Awbury Arboretum District at its April 13 meeting. The full Commission will review the nomination on May 14. The proposed district is a collection of 34 single-family homes constructed between 1849 and 1922 by prominent Quaker Thomas Cope and his descendants. A number of prominent architects are represented, including Thomas Ustick Walter, Addison Hutton, and Cope & Stewardson. The district includes the Awbury Arboretum itself, planted by the Cope family and established as a public park in 1916. The Preservation Alliance prepared the nomination in 2006 and is excited to see it join the growing ranks of Philadelphia’s protected historic districts.

## Milestones in Historic Preservation in Philadelphia

The Preservation Alliance is assembling a list of milestone events in the history of historic preservation in Philadelphia. Our complete timeline can be found online at [www.preservation-alliance.com/advocacy/preservation-in-philly.php#milestones](http://www.preservation-alliance.com/advocacy/preservation-in-philly.php#milestones). Special thanks to Richard Tyler and Harry Kyriakodis for contributing their suggestions. Please share yours with us by emailing [advocacy@preservationalliance.com](mailto:advocacy@preservationalliance.com).

**1748** Swedish botanist Peter Kalm visits Philadelphia, reporting: “A wretched old wooden building, on a hill near the river... is preserved on purpose, as a memorial of the poor state of that place before the town was built on it. Its antiquity gives it a kind of superiority over all the other buildings in town.”

**1960** The Frank Furness-designed University of Pennsylvania Library is threatened with demolition. At a faculty meeting convened in protest, Robert Venturi meets future wife and partner Denise Scott Brown. The building is saved, and Venturi, Scott Brown and Associates complete an award-winning restoration of the library in the 1980s.

**1978** The Joseph Sims House is moved one block, from 228 S. 9th Street to 234 S. 8th Street, to make room for a parking lot. The house is the last remnant of Franklin Row, an 1810 row house development designed by Robert Mills.

TELL US YOUR STORY!

Do you have a favorite building in your neighborhood? A grand church, an old theater, an interesting storefront, a forgotten warehouse? What buildings tell the stories of your Philadelphia?

As part of its Preserve Philadelphia planning campaign, the Preservation Alliance is posting your photos of neighborhood landmarks online at [www.PreservePhiladelphia.org/neighborhood](http://www.PreservePhiladelphia.org/neighborhood). Share with us the buildings that make your neighborhood special, and tour the city’s rich tapestry of neighborhoods with those who know it best.

# THANK YOU! The Preservation Alliance expresses its appreciation to the following organizations and individuals.

## CORNERSTONE SOCIETY

Kenneth P. and Betsy Balin  
Mrs. Deborah Bishop  
Mr. John G. Carr  
Amy & Michael Cohen  
Mr. Allan Domb  
Ms. Sandi Foxx-Jones  
Mr. William Frankel  
Ms. Linda A. Galante  
Mr. John Andrew Gallery  
Mr. and Mrs. Herbert Gunther  
Mr. Douglas Harnsberger, AIA  
Mr. Edward Hillis\*  
Mr. Leroy E. Kean  
Ms. Janet S. Klein\*  
Mr. Marian A. Kornilowicz  
Mr. and Mrs. Stephen Kurtz  
Mr. H.F. Lenfest\*  
Mr. and Mrs. David G. Marshall  
Don and Bevo Meginley\*  
Mr. and Mrs. William E. Millhollen  
The Palmers  
Mr. Paul Pincus  
Peter and Caroline Piven  
Mr. Ronald Rubin  
Mr. Michael T. Scott  
Mr. David Seltzer  
Mr. Paul Steinke  
Ms. Rebecca Stoloff  
Ms. Kate F. Stover and  
Mr. Timothy D. Wood

\* *Leadership Circle members*

## BENEFACTOR

Ms. S. Yvonne Novak and  
Mr. Aaron Weindling  
Switzenbaum & Associates

## CORPORATE SPONSOR

10 Rittenhouse Square  
806 Capital LLC  
ARCWheeler  
The Bancorp Bank  
Bryant Phillips Construction Inc.  
Dan Lepore & Sons Company  
DOMUS, Inc.  
Eastern State Penitentiary  
Haverstick-Borthwick Company  
John Milner Architects, Inc.  
Keast & Hood Co.  
Knapp Masonry  
KSK Architects Planners  
Historians, Inc.  
Milner + Carr Conservation, LLC  
Philadelphia Management Co.  
Philadelphia Museum of Art  
Preservation Initiatives, Inc.  
Restoration Solutions, LLC  
The Shusterman Foundation  
Stradley Ronon Stevens & Young, LLP  
Turner Construction Company  
VITETTA

## PATRON

Mrs. Joseph T. Beardwood, III  
Ms. Helen H. Ford  
Mr. and Mrs. John C. Haas  
Mr. Henry G. Hart, Jr.

Barbara and Jerry Kaplan  
Ms. Nancy D. Kolb  
Mr. Arthur F. Loeben  
Mr. Hugh G. Rouse and  
Mr. Leonard R. Olds  
Mr. James B. Straw  
Miss Lisa M. Witomski

## SUSTAINER

Mrs. Ruth E. Brown  
Mr. and Mrs. David Brownlee  
Tobey and Mark Dichter  
Mr. Mark A. Focht, FASLA  
Ms. Lois Frischling  
Dr. Russell Harris and Mr. John Casavecchia  
Ms. Nancy Heinzen  
Patricia A. McNamara  
Susan O. and Edward A. Montgomery, Jr.  
Mr. and Mrs. John D. Moyer  
Steven J. Peitzman, MD  
Mr. and Mrs. Philip Price, Jr.  
Dan and Barbara Rottenberg  
Mr. Ryan J. Schumann  
Mr. A. Roy Smith  
Mr. and Mrs. Bernard Wilson

## PROFESSIONAL PARTNER

1:1:6 Technologies Incorporated  
A.D. Marble & Company, Inc.  
AIA Philadelphia  
Allied Construction Services II, Inc.  
Andrew R. Palewski,  
Architectural Preservation  
Architectural Window of  
Philadelphia Inc.  
Artistic Doors and Windows Inc.  
The Athenaeum of Philadelphia  
Atkin Olshin Schade Architects  
Blue Rock Construction, Inc.  
Bristol Millwork Inc.  
BRP Development  
Bruce E. Brooks & Associates  
Buell Kratzer Powell Ltd.  
Cecil Baker + Partners  
Center City District  
Chestnut Hill Window  
Dan Lepore & Sons Company  
Daniel J. Keating Co.  
D'Onofrio Services  
Fairmount Park Historic  
Preservation Trust  
George Woodward Co.  
Hanson General Contracting  
Heritage Consulting Group  
Heritage Consulting, Inc.  
Historic Germantown  
Historical Society of  
Pennsylvania  
HUB International  
John Canning & Co.  
John Milner Architects, Inc.  
JRB Historic Restoration LLC  
K & A Appraisal Company  
Kaiserman Company, Inc.  
Kelly/Maiello Architects  
Klehr Harrison Harvey  
Bransburg  
Knapp Masonry  
KPMG LLP  
Kreilick Conservation LLC

KSK Architects Planners  
Historians, Inc.  
Larsen and Landis  
Levine & Company, Inc.  
Loretta C. Witt, CRS, GRI,  
Associate Broker  
Mark B. Thompson Associates  
LLC  
Martin Jay Rosenblum, AIA &  
Associates  
Masonry Preservation Group,  
Inc.  
Masters of Modernism  
Mathieu Lustrerie  
Matthew Millan Architects, Inc.  
McMullen Roofing Inc.  
Michaels Development Company  
Milner + Carr Conservation, LLC  
O'Donnell & Naccarato Inc.  
Palmer Waterproofing, Inc.  
Patterson and Perkiss  
Pennsylvania Horticultural  
Society  
Pennsylvania Real Estate  
Investment Trust  
Philadelphia Industrial  
Development Corp.  
Philadelphia Museum of Art  
Philadelphia Society for the  
Preservation of Landmarks  
Please Touch Museum  
Plumstead Studios  
Powers & Company, Inc.  
Rampart Holdings  
Reading Terminal Market Corp.  
Russell Roofing  
Saul Ewing LLP  
Shelterfield Valuation Services  
SMP Architects  
Mr. Wayne S. Spilove  
Stradley Ronon Stevens & Young  
LLP  
Templetown Realty  
Toll Brothers, Inc.  
UCI Architects  
University of Pennsylvania  
Voith & Mactavish Architects  
W.S. Cumby, Inc.  
Watson & Henry Associates  
Wu & Associates, Inc.

## CONTRIBUTOR

Ms. Andrea Ashby  
Mr. Fred Allen Barfoot  
Ms. Suzanna E. Barucco  
Mrs. Flora L. Becker  
Mr. William Becker  
Paul and Karen Black  
Mr. Allen D. Black  
Mr. Lawrence D. Bodine  
Mr. and Mrs. Hans Bombeck  
Mr. J. Blaine Bonham, Jr.  
Mr. Andrew J. Braunstein  
Mr. Darrin T. Britting  
Mr. and Mrs. Stanhope S. Browne  
Mr. Eugene Buckley III and  
Mr. Colin Likens  
Mr. and Mrs. Carter Buller  
Eleanor and Nicholas Cernansky  
Ms. Janet Chapman-Mason  
Mr. Richard M. Cole  
Ms. Emily T. Cooperman  
Ms. Jeanne F. Coryell  
Peter and Susan Crawford

Ms. Marguerite S. Culp  
Mrs. Sonia R. Dasgupta  
Mr. David G. DeLong  
Mr. F. Scott Donahue  
Mr. John P. Dougherty  
Ms. Elizabeth T. Drum and Mr.  
Marc DiNardo  
Mr. Kevin Duffy  
Ron Emrich and Marc Coleman  
Ms. M.L. Alexandra Escher  
Mr. Walter C. Evans  
Ms. Barbara V. Farley  
Mr. Edward S. Farmer  
Mr. Anthony P. Forte, Esq.  
Mr. Philip E. Franks  
Mr. Richard Frey  
Mr. and Mrs. Martin Goldberg  
Ms. Janet Grace  
Mr. and Mrs. G. Davis Greene  
Mr. David Hahn  
Mr. Marshall Hamilton  
Ms. Barbara J. Hare and Mr.  
George Dixon  
Ms. Adena Herskovitz  
Mr. David Hollenberg  
Richard and Susan Huffman  
Timothy and Aurora Hughes  
Mr. Louis A. Iatarola  
Ms. Doris E. Italiano  
Mr. Karsten Jacobsen  
Ms. Beth Ann Johnson and Mr.  
John Andrews-Labenski  
Mrs. Gay G. Johnson  
Mr. Kenneth S. Kaiserman  
Stephen Kaufman and Sydelle  
Zove  
Mr. Timothy A. Kerner  
Mr. James Nelson Kise and Ms.  
Sarah L.O. Smith  
Ms. Dorothy S. Krotzer  
John T. Lehman and Christine  
Carlson  
Honorable Samuel M. Lehrer  
Ms. Lois Linden  
Mr. Robert W. Loder  
Mr. Eric Lorgus  
Ms. Diana J. Mackie  
Dr. Randall F. Mason  
Ms. Mona T. McLean  
Ms. JoAnne Meyers  
Ms. Elizabeth K. Miller  
Ms. Diana Montgomery and Mr.  
Brett Krasnov  
Mr. C.J. Moore  
Mr. Jason R. Nathan  
T.T. Newbold and Helen  
Cunningham  
Craig M. Oliner, MD  
Russell E. Palmer III and Stephen  
T. Janick  
Ms. Patricia Patterson  
Ms. Judith A. Peters  
Mr. C. DeWitt Peterson  
Ms. Anne L. Prosseda  
Mr. Joseph F. Purcell  
Queen Village Neighbors  
Association  
Dr. and Mrs. Scott A. Reines  
Ms. Gloria F. Reisman  
Mr. William H. Richards  
Mrs. Brooke Roberts  
Dr. and Mrs. Donald J. Rosato  
Ms. Patricia Royston  
Marvin and Ruth Sachs

Mr. and Mrs. Robert and Marie  
Schwarz  
Mr. and Mrs. Charles M. Shearer  
Mr. Geoffrey C. Shepard  
Dr. George Skarmeeas, AIA and  
Ms. Dominique Hawkins, AIA  
Mr. Hedgman D. Smith  
Mr. Patrick Starr  
Mr. and Mrs. David Stevens  
Mr. David R. Strange  
Ms. Ann P. Stroud  
Mrs. Barbara Billings Supplee  
Mr. Henderson Supplee, III  
Ms. Claudia M. Tesoro  
Ms. Elise Vider and Mr. Richard  
Polman  
Mr. Mark Wagenfeld  
Mr. Kenneth Weinstein  
Dane and Joan Wells  
Mr. Thomas C. Woodward

## HOUSEHOLD

Mr. Bill Abraham  
Mrs. Delores Alfe  
Ms. Margaret Almon  
Charles and Stephanie Bell  
Andrews  
Mr. and Mrs. Henry F. Barlow  
Robert and Eleanor Barr  
Ms. Marie Barry  
Mr. Stephen Bartlett  
Ms. Alida S. Becker  
Mr. and Mrs. Paul and Harriet  
Beckert  
Eugene and Virginia Beier  
Mr. Perry Benson, Jr.  
Mr. Roy Bernat  
Mr. Edward Harrison Bernstein,  
AIA  
Ms. Gene Bishop  
Mr. Stephen M. Bonitatibus  
Ms. Joy Ellen Booth  
Mr. Jeffrey Braff and Ms. Hope  
Comisky  
Mr. H.E. Broadbent, III  
Ed and Sophie Bronstein  
Dr. and Mrs. Nick Bryan  
Mr. and Mrs. Theodore Burkett  
Charles and Margo Burnette  
Mr. John Linton Butler  
James and Diane Calkins  
Mr. and Mrs. Kenneth Carlin  
Ms. Astrid M. Caruso and Mr.  
Roger T. Prichard  
Robert and Jennifer Celata  
Mr. Joseph Charles  
Mr. and Mrs. Anthony P.  
Checchia  
Ms. Betsy V. Christopher  
Mr. and Mrs. Mark Cochard  
Ms. Mary K. Cole  
Mr. Paul S. Connors  
Mr. and Mrs. Howard Coonley, II  
Mr. Gerald M. Cope, FAIA  
Mr. David Crossman  
Rob and Lynne Currie  
Andrew and Tracey Dalton  
Ms. Taryn M. D'Ambrogio and  
Mr. Chad Trexler  
Mr. Thierry Danz  
Mr. and Mrs. Christopher J.  
Dieckhaus  
Mr. Jay M. Donner

Mr. James Donohue and Ms.  
Carol Mager  
Mr. G. Morris Dorrance, Jr.  
Mr. and Mrs. Abner W. Dowdell  
Ms. Louisa C. Dubin  
Mr. and Mrs. Donald F. Duclow  
Mr. and Mrs. William J. Dugan  
Dr. and Mrs. Bruce S. Dunn  
Mr. William Eberhardt  
Mr. William R. Eberhardt  
Ms. Robin Eisenberg  
Stephen D. Ellis, PhD  
Doris Devine Fanelli and Robert  
N. Fanelli  
Mr. Jay Ferman and Ms. Sylvia  
Beck  
Mr. Michael Patrick Felker  
Mrs. Donald L. Felley  
Mr. James Fennell  
Mr. Paul Ferdinand  
Mr. William Fisher & Mr.  
Kenneth George  
Mr. Mark Flood  
Ms. Sandra A. Foehl and Mr.  
Robert P. Ruffin  
Mr. George Folkman  
Dodi Fordham and Sam Howe  
Mr. and Mrs. Kenneth Frank  
Dr. and Mrs. Ben-Zion Friedman  
Dr. and Mrs. Robert F. Gallagher  
Ms. Phyllis Gottlieb  
Frank and Jean J. Greenberg  
Mr. William Greene  
Crystal Grice and Kittura Dior  
Ms. Gabriele B. Grosch  
Carmen E. Guerra, MD and Dilip  
B. Viswanath, MD  
Ms. Nan Gutterman and Mr.  
William Irby, Jr.  
Jeanne and Murray Halfond  
Christopher and Clare Hall  
Mr. Michael Hardy and Mr. Barry  
Grossbach  
Ms. Carol Ann Harris  
Mr. and Mrs. Konrad P. Hartl  
Mr. Gregory M. Harvey  
Mr. and Mrs. Henry Hauptfuhrer,  
IV  
Mr. Stacey Hendricks  
Ms. Kathy Hodgkiss and Mr.  
Martin Harrell  
Mr. Robert J. Hotes, AIA  
Mrs. Mary Anne Hunter  
Ms. Carol A. Ingald  
Mr. Frank Innes  
Mr. and Mrs. Russell Jackson  
Dr. Kenneth Jacobs and Dr.  
Evelyn Wiener  
Mr. Greg James  
Ms. Kim Jessum  
Mr. and Mrs. Hugh McB.  
Johnston  
Rep. Babette Josephs  
Mr. and Mrs. Stephen Kalstein  
Mrs. Brearley B. Karsch  
Mr. Patrick Kavanagh  
Mr. Thomas H. Keels  
Mr. and Mrs. Lewis Keen  
Mr. and Mrs. Lloyd Kern  
Mrs. W. Stanton Kip  
Ms. Victoria Kirkham  
Mr. Andrew Kite and Mr. Karl  
Martin  
Donald and Katharine Kriebel

Ms. Teresa G. Labov  
Chris and Lindsay Lane  
Mr. and Mrs. Peter Lapham  
Ms. Gabriele W. Lee  
Mr. Gerry Lee  
Ms. Susan Lelek  
Joan and Jeffrey Less  
Morton Levitt and Annette Shandler Levitt  
Mr. Joe Lex and Ms. Andrea Urban  
Mr. Jim Lord and Ms. Diane Rurode  
Paul and Mary Mangelsdorf  
Mr. Scott Maritzer and Miss Danielle Ducoeur  
Mr. and Mrs. Richard Markowitz  
Mr. Charles E. Mather, III  
Mr. James F. McCaffery  
Ms. Jane McGowan  
William McMenam and Carole Covert  
Ms. Carol A. Menke  
Ms. Madelyn Mignatti  
Mr. Lynn Miller  
Dr. Randall M. Miller  
Ms. Marilyn Moody and Mr. Jeff Baumann  
Ms. Nancy Moses  
Drs. Roger Moss and Gail Winkler  
Ms. Mary E. Mulderrig  
Fred and Priscilla Murphy  
Patrick J. Murphy & Associates Inc  
Mr. Dennis A. Murphy  
Mr. Hyman Myers  
Mr. Hyman Myers  
Ms. Judith A. Nagle  
Mr. Arthur Newbold, IV  
Ms. Edith Newhall and Mr. David Walters  
Mr. Michael L. Norris  
Mr. Samuel Olshin  
Ms. Sheila O'Shaughnessy  
Mr. and Mrs. Wendell Owens  
Mr. John Pcsolar and Dr. Alan Sandman  
Tamara C. Peace and Yvonne Chism Peace  
Mr. Paul E. Pickering  
Mr. Daniel N. Piotrowski  
Ms. Carolyn Placke  
Mr. and Mrs. Joseph Pokrifka  
Mr. Michael Prell  
Mr. Theodore L. Reed  
Ms. Margaretta Richardi  
Dr. Wallace Ritchie, Jr.  
Mr. Vincent Rivera, AIA  
Theodore and Margaret Armstrong Robb  
Joseph and Meryl Rodgers  
Dr. and Mrs. Bernard Rothman  
Mr. David Baron Rowland  
Ms. Jeanette H. Russell  
Ms. Ann M. Ryan  
Mr. and Mrs. Mark R. Sellers  
Mr. and Mrs. Sumantra and Tanya Sen  
Mr. Thomas Shaffer and Mr. Joe Roy  
Ms. Elisabeth Shellenberger  
Mr. Glenn E. Sickenberger  
Mr. Jacob A. Smith  
Ms. Joan Snowden  
Judy and Larry Snyder  
Sam and Rosanne Spear  
Dr. and Mrs. Gus Spector

Mr. and Mrs. Anthony D. Stagliano  
Ms. Marian Staley  
Mr. Jonathan Stavin  
Ms. Elsie Stevens  
Mr. John M. Stevenson  
Dr. and Mrs. Bayard T. Storey  
Mr. Andy S. Tan  
Mrs. Sabina D. Tannenbaum  
Edward and Mildred Teitelman  
Ms. Karen Tourian and Mr. Rolf Windh  
Mr. Andrew Trackman and Family  
Mr. Michael Tunney  
Mr. Robert Venturi and Ms. Denise Scott Brown  
Mr. Fred Vincent  
Peggy and Ellis Wachs  
Edward and Anne Wagner  
Ms. Elizabeth J. Walker  
Mr. and Mrs. Robert B. Watson  
Mr. Richard W. Weeks and Mr. John G. McClafferty  
Ms. Mildred Weinstock  
Mrs. Jacqueline S. Weiss  
Mr. and Mrs. Anthony M. Wells  
Ms. S. Kathrine Whitaker  
Mr. Oliver P. Williams  
Ms. Beverly Wilson  
Ms. Jean K. Wolf  
Mr. J. Matthew Wolfe  
Mrs. Lorle P. Wolfson  
Mr. Richard Wolgin  
Mr. Robert Wright  
Mr. and Mrs. Alexander S. Wysocki  
Robert and Barbara Hunter Yankevicz  
Mr. Joseph A. Yorke  
Dr. Randy J. Zauhar

#### INDIVIDUAL

Ms. Joanne Aitken, AIA  
Mr. Gary A. Albright  
Ms. Veronica E. Aplenc  
Mr. John H. Arnold  
Ms. Susan Babbitt  
Mr. Joy Baker  
Dr. Regina Bannan  
Mr. Charles M. Barclay  
Mr. Joseph Barker  
Ms. Justina Barrett  
Mr. Dan W. Barto  
Kenneth J. Basalik, PhD  
Mr. Lawrence Bass  
Ms. Marilyn A. Becker  
Mr. Jerry M. Belew  
Ms. Lisa M. Berkoski  
Mr. Robert Bernstein  
Jan Edward Bixler, PhD  
Mr. Steven C. Black  
Mr. Kenneth C. Blood  
Mr. Louis Bluver  
Mr. Eric Boisich  
Mr. Robert Bradley  
Mr. James D. Brett  
Ms. Judith A. Brindle  
Ms. Kim Broadbent  
Ms. Kate Brower  
Ms. Sheila M. Brown  
Ms. Jean E. Brubaker  
Mr. Jeffrey J. Brummer, AIA  
Ms. Ursula Bucki  
Ms. Michelle Budenz  
Mr. John V. Buffington, Esq.  
Ms. Monika Burke  
Ms. Philippa Campbell

Ms. Carolyn Cardinale  
Ms. Christine M. Cayer  
Ms. Rochelle Christopher  
Mr. Nathan Clark  
Mrs. Kathleen Clarke  
Mr. John H. Cluver  
Ms. Melinda J. Combe  
Mr. Scott Conti  
Mr. Vince Corcoran  
Mr. Peter S. Cressman  
Ms. Elizabeth B. Croll  
Mrs. Barbara Culbert  
Ms. Catherine A. Daab  
Ms. Elizabeth D'Angelo  
Joseph D'Antonio, MD  
Dr. Patricia M. Danzon  
Mr. Court D. Daspit  
Ms. Johnette Davies  
Mr. Matthew DeJulio  
Mrs. Helen B. Desher  
Mr. Eugene Desyatnik  
Mr. Thomas Detwiler  
Mrs. Terry Knight Di Ubaldi  
Ms. Clarissa Dillon  
Ms. Kelly A. Donohoe  
Ms. Jane E. Dorchester  
Ms. Elizabeth W. Downey  
Ms. Kathrinne V. Duffy  
Ms. Mary H. Ebert  
Mr. Bernard L. Edelstein  
Ms. Susan Edens  
Ms. Vivienne Ehret  
Mr. T. Arden Eidell  
Ms. Danette A. Ernst  
Ms. Elizabeth O. Evans  
Ms. Patricia Evers  
Ms. Mary Anne Eves  
Mrs. Susan E. Faccioli  
Mr. John A. Farmakis  
Mr. Jeff Faust  
Mr. James Feeney  
Beau-Janette Feldman  
Mr. Louis N. Ferrero  
Ms. Diana M. Fertik  
J.D. Fidler  
Ms. Mary Jane Fischer  
Miss Mary L. Fleisher  
Ms. Kathleen A. Foster  
Mr. Rick A. Fought  
Mr. Walter B. Freas, Jr.  
Mr. J. Stuart Freeman  
Ms. Alexandra Friedman  
Mr. Michael Funk  
Ms. Judi Garst  
Mr. Stephen Anthony Geraci  
Mrs. Eleanor Gesensway  
Mrs. Mary P. Giersch  
Mr. Robert Gorczyk  
Ms. Meredith M. Gowell  
Mr. Jeff Groff  
Mr. Howard Haas  
Ms. Rose Hagan  
Ms. Denise A. Hall  
Ms. Portia Hamilton-Sperr  
Mr. Joseph Haro  
Mr. Matthew Harris  
Mr. Raymond J. Harris  
Mr. Todd Hart  
Mr. Adam N. Hayes  
Mr. Gregory Heller  
Ms. Jill N. Horn  
Mr. Brian Horne  
Dona W. Horowitz-Behrend, PhD  
Dr. Paul J. Hoyer  
Mr. Francis J. Hughes

Ms. Rebecca A. Hunt  
Mr. Scott G. Huston  
Ms. Marlynn Jannett  
Ms. Elizabeth F. Jarvis  
Ms. Jen Jasuta  
Ms. Kate Jefferson  
Mr. Adam Jenkins  
Miss Melissa Jest  
Mr. and Mrs. Victor L. Johnson  
Dr. Madeleine M. Joullie-Prange  
Mr. Christopher Jungers  
Mr. Philip Kane  
Ms. Laurel Katz  
Mrs. Hannah Kaufman  
Ms. Holly Keefe  
Mr. Sean Kelley  
Mr. William Keough  
Ms. Beatrice A. Kerridge  
Ms. Susan Kessler  
Mr. Robert H. Kettell  
Ms. Phyllis Kidder  
Ms. Maria Konidaris  
Mrs. Evelyn S. Kritchevsky  
Mrs. Sally L. Kuder  
Mr. Harry Kyriakodis  
Ms. Hollie Landela  
Ms. Liuba Lashchuk  
Ms. Mae Laster  
Mr. David M. Lauer  
Ms. Vera Lerner  
Judith E. Levin  
Ms. Fran Levy  
Ms. Alison M. Lewis  
Ms. Nancy Lisagor  
Ms. SuzAnne R. Liss  
Mrs. Cecily Littleton  
Ms. Wanda Lopez-Bobonis  
Mr. Marcello A. Luzi  
Mr. Henry J. Magaziner, EFAIA  
Ms. Carole Maher  
Ms. Bette Jane Male  
Mr. Howard Maniloff  
Mr. Bill Marsh  
Mr. William W. Marsh, Jr.  
Ms. Michelle Marx  
Mr. Will Maus  
Ms. Kelly K. McBride  
Mr. Christopher I. McCabe  
Ms. Alisa McCann  
Ms. Logan Mcclintic-Smith  
Ms. Ann B. McNamee  
Ms. Jill McNeil  
Mr. David M. McQuiston  
Alan Metcalfe  
Ms. Susan M. Metrow  
Mr. and Mrs. Philippus Miller, Jr.  
Mrs. Henry Mitchell  
Ms. Martha Moffat  
Ms. Constance C. Moore  
Mr. James G. Mundy  
Ms. Anita M. Myette  
Ms. Sherry Nelson  
Dr. Mark W. Nester  
Ms. Iris Newman  
Ms. Charlene A. Nolten  
Mr. James P. O'Brien  
Ms. Arlene Olson  
Ms. Melissa J. Orner  
Mr. Henry Papit  
Mr. Wesley D. Parrott  
Ms. Charlotte Peitzman  
Ms. Eleanor J. Penniman  
Mr. Robert V. Peters  
Mr. Robert Petito, Jr.  
Ms. Daria G. Petraglia  
Ms. Andrea Nadel Pilling

Ms. Melissa Gordon Pinheiro  
Mr. Matthew E. Pisarski  
Ms. Nancy Pontone  
Ms. Diana Post  
Ms. Janet Greenstein Potter  
Mr. Daniel M. Procopio  
Ms. Laura M. Randar  
Mr. and Mrs. Otto Reichert-Facilides  
Kenneth A. Richman, MD  
Ms. Joan Roberts  
G S. Robinson  
Mr. Walter R. Romanchek  
Ms. Catherine A. Rossetti  
Ms. Rachel Royer  
Mr. Fred Schaefer  
Ms. Beverly Schaefer  
Ms. Laura Scheerer  
Ms. Ceci Schickel  
Mr. Bryan J. Schmalbach  
Mr. Peter D. Schneider  
Ms. Jacque-Lynne Schulman  
Mr. Clifford Schwinger  
Mr. John Scolastico, Jr.  
Ms. Dorothy M. Selgrath  
Ms. Leigh Seyfert Hassler  
Ms. Nancy Shearer  
Ms. Anne W. Sims  
Ms. Karen B. Singer  
Mr. David L. Skolnick  
Mr. Gregory T. Smith  
Ms. Jill Sommer  
Ms. Carol M. Spawn  
Ms. Paula G. Spielberg  
Dr. Paula Spilner  
Mr. Joel Spivak  
Mr. Nicholas J. Sporer  
Mr. Stephen Louis Stamm  
Mr. and Mrs. Bertram Strieb  
Mr. Marvin D. Suer  
Mrs. Shirley Swaab  
Mr. Hal Tarr  
Ms. Cynthia Temple  
Mr. Mike Thaete  
Ms. Letty D. Thall  
Mr. Michael Tomlan  
Ms. Megan A. Trainer  
Mr. Robert Ulrich  
Mr. Richard T. Urbani  
Ms. Rachel M. Vassar  
Mr. Don L. Verdiani  
Ms. Margo M. Villanova  
Mr. David Voggenthaler  
Mr. Solomon Volen  
Ms. Sandra Vondeling  
Mr. Carroll H. Walker  
Mr. Jody Walter  
Mr. Mike Wass  
Ms. Julie D. Watson  
Mrs. Helma N. Weeks  
Mr. Lawrence A. Weintraub  
Ms. Louise Weldon  
Mr. Arthur Wheelock  
Mr. Gerald Karl White  
Ms. E. Tama Williams  
Ms. Audrey Wixson  
Mr. Brian K. Wormley  
Mr. Edward Yarwood  
Mr. Anthony D. Yoder  
Mr. Charles B. Young  
Ms. Gloria Yu  
Ms. Jessica L. Zeigler-Cihlar  
Mr. George C. Zolot  
Ms. Hope Zoss

#### STUDENT

Ms. Lindsey E. Allen  
Mr. Joseph E. Avon  
Mr. George P. Bassett  
Mr. Harvey J. Bomberger  
Mrs. Katie Friesen  
Ms. Alice M. George  
Ms. Marlene Goeke  
Ms. Prema Katari Gupta  
Ms. Libbie Hawes  
Mr. Ross Hennesy  
Mr. Corey Hovanec  
Ms. Sharon B. Jaffe  
Ms. Natalie Karas  
Mr. Patrick Kidd  
Ms. Rebekah Krieger  
Ms. Amanda H. Niesen  
Ms. Michaela Reeser  
Ms. Sharon Reid  
Mr. Shawn P. Roberts  
Ms. Karen L. Segal  
Ms. Christine M. Sincavage  
Mrs. Aysem Kilinc Unlu  
Mr. Nathan Winkler-Rhodes

#### NON-PROFIT

The Business Center for Entrepreneurship & Social Enterprise  
Cheltenham Township  
Chestnut Hill Historical Society  
Christ Church Preservation Trust  
City of Philadelphia Dept. of Records  
East Bradford Township  
Friends of Laurel Hill Cemetery  
Glen Foerd on the Delaware  
Gloria Dei (Old Swedes') Church  
Greater Philadelphia Tourism Marketing Corp.  
Interpret Green  
King Library Restoration Fund, Inc.  
Liberation Fellowship  
Community Development Corp.  
Philadelphia Art Alliance  
Society Hill Civic Association  
Wagner Free Institute of Science  
Woodlands Trust

#### FOUNDATIONS

National Trust for Historic Preservation  
Pennsylvania Historical and Museum Commission  
The Pew Center for Arts and Heritage, through the Heritage Philadelphia Program  
Philadelphia Cultural Fund  
Samuel S. Fels Fund  
William Penn Foundation

#### PARTNERS IN THE FIELD

Anonymous  
John and Chara Haas  
H.F. Gerry Lenfest  
National Trust for Historic Preservation  
Samuel S. Fels Fund

*List complete as of April 14, 2010.*

# ARE YOU A MEMBER?

YOUR PRESERVATION ALLIANCE MEMBERSHIP  
HELPS TO PRESERVE THE ARCHITECTURAL TREASURES AND  
HISTORIC PLACES OF THE PHILADELPHIA REGION.

For details on exclusive member benefits, go to [www.PreservationAlliance.com](http://www.PreservationAlliance.com)

Join online or use this form

Student \$25  Individual \$35  Household \$50  Contributor \$100  
 Sustainer \$250  Patron \$500  Benefactor \$1,000

CORPORATE MEMBERSHIP

Non-Profit \$75  Professional Partner \$250  Corporate Sponsor \$1,000  
 My check (payable to Preservation Alliance) is enclosed

Please charge my:  Visa  Master Card  American Express

Card # \_\_\_\_\_ Exp. Date \_\_\_\_\_

Name \_\_\_\_\_

Address \_\_\_\_\_

Phone \_\_\_\_\_ Email \_\_\_\_\_

I prefer not to receive membership gifts.

Please mail this application to: **Preservation Alliance**  
**1616 Walnut Street, Suite 1620, Philadelphia, PA 19103**

Memberships are tax deductible to the extent allowed by law. A copy of the official registration and financial information may be obtained from the Pennsylvania Department of State by calling toll free, within Pennsylvania, 1.800.732.0999. Registration does not imply endorsement.

## YOU CAN MAKE A DIFFERENCE!



## PRESERVATION ALLIANCE

*for greater philadelphia*

1616 Walnut Street, Suite 1620  
Philadelphia, PA 19103

Nonprofit Organization  
U.S. Postage PAID  
Philadelphia, PA  
Permit No. 987

### PRESERVATION ALLIANCE FOR GREATER PHILADELPHIA

1616 Walnut Street, Suite 1620  
Philadelphia, PA 19103

TEL 215.546.1146 FAX 215.546.1180  
E-MAIL [info@preservationalliance.com](mailto:info@preservationalliance.com)  
WEB SITE [www.PreservationAlliance.com](http://www.PreservationAlliance.com)

#### BOARD OF DIRECTORS

Katherine A. Dowdell, AIA *Chair*  
Peter C. Benton, AIA *Vice Chair*  
Rosemarie Fabien, PhD *Secretary*  
Christophe P. Terlizzi *Treasurer*  
John G. Carr  
Joseph P. Charles  
Linda A. Galante, Esq.  
Susan Glassman  
Michael Holleman, AIA  
Marian A. Kornilowicz, Esq.  
Eugene Lefevre  
Stephen D. Marshall  
Randall F. Mason, PhD  
Andrew Palewski  
Harry Schwartz, Esq.  
Rebecca Stoloff  
Thomas J. Sugrue  
Rev. Mark Kelly Tyler  
Diane-Louise (D-L) Wormley

#### STAFF

John Andrew Gallery *Executive Director*  
Patrick Hauck *Director of Neighborhood  
Preservation Programs*  
Melissa Jest *Neighborhood Preservation  
Program Coordinator*  
Benjamin Leech *Director of Advocacy*  
Holly Keefe *Director of Membership  
Development*

The Preservation Alliance for Greater Philadelphia actively promotes the appreciation, protection, and revitalization of the Philadelphia region's historic buildings, communities and landscapes.



## Congratulates

## The 2010 Achievement Award Winners

## Of the Preservation Alliance For Greater Philadelphia

## Thank you For all of your hard work and dedication